

October 5, 2010

**TRUE VISION CHURCH
Kirby, Texas**

ADDENDUM NO. 1

- ITEM 001** Specification – 01030 Alternates – Alternates Revised
See Attachment No. 1
- ITEM 002** Specification – 02260 – Grading
See Attachment No. 2
- ITEM 003** Specification – 08350 – Folding Doors
See Attachment No. 3
- ITEM 004** Specification – 08351 – Accordion Partitions
See Attachment No. 4
- ITEM 005** Supplemental Drawing – SD1 Parapet Detail
See Attachment No. 5
- ITEM 006** Drawing – Sheet A2.30 – Details 01 and 04 – Dimension Text Resized
See Attachment No. 6

END OF ADDENDUM NO. 1

Section 01030-Alternates

PART 1 – GENERAL

I. SUMMARY

- A. Owner will determine which alternates are selected for inclusion in the Contract.
- B. Alternates are described briefly in this section. The Contract Documents define the requirements for the alternate(s).
- C. Coordinate alternates with related work to ensure that work affected by each selected alternate is properly accomplished.

PART 2 – PRODUCTS – None applicable to this section

PART 3 – EXECUTION

I. SCHEDULE OF ALTERNATES

- A. Alternate #1 – Balcony finish out in sanctuary
- B. Alternate #2 – Construction of Chapel.
- C. Alternate #3 – Construction of detached garage
- D. Alternate #4 – Flush valve water closets in restrooms 128 and 129

Restrooms 128 and 129 to include flush valve water closets in lieu of flush tanks. Incoming domestic waterline shall be 3” in lieu of 2” for the alternate. Plumbing contractor shall be responsible for making the necessary changes to the pipe sizes.

- E. Alternate # 5 – Stained Concrete in lieu of VCT in Sanctuary building at Foyer (105), Fellowship (116) and Hallways (115A-C).

END OF SECTION 01030

Section 02260-Grading

PART 1 – GENERAL

I. SUMMARY

- A. The work called for by this section shall include, but not necessarily be limited to, finish grading and the spreading and shaping of topsoil to the finished contour elevations indicated by the drawings.
- B. Refer to other sections for work related to that specified under this heading. Coordinate this work with that specified by other sections for timely execution.

PART 2 – PRODUCTS

I. MATERIALS

- A. Topsoil: use stripped topsoil that has been stockpiled as specified elsewhere. If the quantity of topsoil on the job is inadequate, furnish enough additional topsoil. Topsoil furnished shall be natural, fertile friable soil possessing characteristics of representative productive soils in the vicinity. It shall be obtained from naturally well drained areas. It shall not be excessively acid or alkaline nor contain toxic substances that may be harmful to plant growth. Topsoil shall be without admixture of subsoil and shall be cleaned and reasonably free from clay lumps, stones, stumps, roots, or similar substances 2 inches or more in diameter, debris or other objects that are a hindrance to planting operations. Such material shall be subject to testing.

PART 3 – EXECUTION

I. PREPARATION

- A. Do not begin work until earth is dry enough to be tillable.
- B. Inspect subgrade to see that they generally conform to the standards called for elsewhere in these specifications, particularly with regard to the approximate depths required for the work. After work is completed, inspect it to ensure that all finish grading complies with design requirements.
- C. Place finished grade stakes wherever necessary to bring the work accurately to the elevations required by the drawings.

II. INSTALLATION

- A. Finish grade all areas outside the building line to the depths required for the work as follows:
1. Grade uniformly with rounded surfaces at the tops and bottom of abrupt changes of planes.
 2. Hand grade steep slopes and areas that are inaccessible for machine work.
 3. Protect graded areas from undue erosion, and repair and regrade areas where erosion does occur.
 4. Refill areas where noticeable settlement has occurred.
 5. Finish grade areas that are to receive topsoil up to 4 inches below the finished contour elevations called for by the drawings or, over rock, to 12 inches below these elevations.
- B. Place topsoil uniformly over disturbed areas that do not receive other work as follows:
1. Obtain approval of the finish grading from Timbercon Construction before starting to place topsoil.
 2. Scarify subgrade to a depth of 3 inches
 3. Place the topsoil to a depth of 6" when lightly rolled or on rock, to a depth of 12 inches.
 4. Level the topsoil so that it slopes uniformly and has no water pockets.
 5. Carefully rake the topsoil by hand to remove all clods, roots, sticks, stones over 1 inch in diameter, and other foreign materials from the surface.
- C. Dispose of acceptable excess excavated materials and debris by flattening fill slopes.

END OF SECTION 02260

Section 08350 –Folding Doors and Partitions - Series 632 Paired Panels

PART 1 – GENERAL

I. DESCRIPTION

A. General

1. Furnish and install operable partitions and suspension system. Provide all labor, materials, tools, equipment, and services for operable walls in accordance with provisions of contract documents.

II. RELATED WORK BY OTHERS

- A. Preparation of opening will be by General Contractor. Any deviation of site conditions contrary to approved shop drawings must be called to the attention of the architect.
- B. All header, blocking, support structures, jambs, track enclosures, surrounding insulation, and sound baffles as required in 1.04 Quality Assurance.
- C. Prepunching of support structure in accordance with approved shop drawings.
- D. Paint or otherwise finishing all trim and other materials adjoining head and jamb of operable partitions.

III. SUBMITTALS

- A. Complete shop drawings are to be provided prior to fabrication indicating construction and installation details. Shop drawings must be submitted within 60 days after receipt of signed contract.

IV. QUALITY ASSURANCE

- A. Preparation of the opening shall conform to the criteria set forth per ASTM E557 Standard Practice for Architectural Application and Installation of Operable Partitions
- B. The partition STC (Sound Transmission Classification) shall be achieved per the standard test methods ASTM E90.
- C. Noise isolation classifications shall be achieved per the standard test methods ASTM E336 and ASTM E413.

- D. Noise Reduction Coefficient (NRC) ratings shall be per ASTM C423.
- E. Rack testing for 10 years. (tensional strength stress test)
- F. The manufacturer shall have a quality system that is registered to the ISO 9001 standards.

V. PRODUCT DELIVERY, STORAGE, AND HANDLING

- A. Proper storage of partitions before installation and continued protection during and after installation will be the responsibility of the General Contractor.

VI. WARRANTY

- A. Partition system shall be guaranteed for a period of two years against defects in material and workmanship, excluding abuse.

PART 2 - PRODUCTS

I. ACCEPTABLE MANUFACTURERS

- A. Upon compliance with all of the criteria specified in this section, Manufacturers wishing to bid products equal to the product specified must submit to the architect 10 days prior to bidding complete data in support of compliance and a list of three past installations of products similar to those listed. The submitting manufacturer guarantees the proposed substituted product complies with the performance items specified and as detailed on the drawings.

II. MATERIALS

- A. Product to be top supported Series 632 paired panels as manufactured by Hufcor Inc.
 - 1. Panels shall be nominally 3" [76] thick, to 48" [1219] in width, and hinged in pairs.
 - 2. Panel faces shall be laminated to appropriate substrate to meet the STC requirement in 2.04 Acoustical Performance.

3. Frames shall be of 16 gauge [1.42mm] painted steel with integral factory applied aluminum vertical edge and face protection.
Optional: Face finish shall wrap around the vertical panel edges and provide no protective vertical face trim.
 4. Vertical sound seals shall be of tongue and groove configuration, ensure panel-to-panel alignment and prevent sound leaks between panels.
 5. Horizontal top seals shall be fixed continuous contact dual 4-finger vinyl.
 6. Horizontal bottom seals shall be fixed continuous contact dual 4-finger vinyl.
 7. Horizontal trim shall be of aluminum.
 8. Low profile hinges on basic panels shall be of steel and project no more than 1/4" [6] beyond panel faces. Each pair of panels to have a minimum of three hinges.
- B. Weight of the panels shall be 5.7-10.2 lbs. per sq. ft. [27.8- 49.8kg/sq.m] based on options selected.
- C. Suspension system:
1. Track shall be of clear anodized architectural grade extruded aluminum alloy 6063-T6. Track design shall provide precise alignment at the trolley running surfaces and provide integral support for adjoining ceiling, soffit, or plenum sound barrier. Track shall be connected to the structural support by pairs of minimum 3/8" [10] dia. threaded steel hanger rods. Guide rails and/or track sweep seals shall not be required.
 - a. Each panel shall be supported by one 4-wheeled carrier. Wheels to be of hardened steel ball bearings encased with molded polymer tires.
- D. Finishes
1. Face finish shall be: (select as required):

Factory applied reinforced vinyl fabric with woven backing, weighing not less than 15 oz. per lineal yard [465 g/m]. Color shall be selected from manufacturer's standard color selectors.

III. OPERATION

A. Panels shall be manually moved from the storage area, positioned in the opening, and seals set.

B. Retractable Horizontal Seals

1. Retractable horizontal seals shall be activated by a removable quick-set operating handle located approximately 42" [1067] from the floor in the panel edge.

2. All retractable seals in each hinged pair shall be operated simultaneously.

3. Seal activation requires approximately 15 lbs. [6.8 kg] of force per panel and approximately a 190 degree turn of the removable handle.

C. Final partition closure to be by (select one):

1. Lever closure panel with expanding jamb which compensates for minor wall irregularities and provides a minimum of 250 lbs. [113.4kg] seal force against the adjacent wall for optimum sound control. The jamb activator shall be located approximately 45" [1143] from the floor in the panel face and be accessed from either side of the panel. The jamb is equipped with a mechanical rack and pinion gear drive mechanism and shall extend 4"-6" [100-152] by turning the removable operating handle.

E. Stack/Store Panels

Retract seals and move to storage area. Panels may be stored at either or both ends of the track or in a pocket.

IV. ACOUSTICAL PERFORMANCE

A. Acoustical performance shall be tested at a laboratory accredited by the U.S. Dept. of Commerce, National Institute of Standards and Technology, under the National Voluntary Laboratory Accreditation Program (NVLAP) and in

accordance with ASTM E90 Test Standards. Standard panel construction shall have obtained an STC rating of (Owner Selected): 41, 43, 47, 49, 51
(Not all substrates are available in all STC ratings)

PART 3 - EXECUTION

A. Installation. The complete installation of the operable wall system shall be by an authorized factory-trained installer and be in strict accordance with the approved shop drawings and manufacturer's standard printed specifications, instructions, and recommendations.

B. Cleaning

1. All track and panel surfaces shall be wiped clean and free of handprints, grease, and soil.
2. Cartoning and other installation debris shall be removed to onsite waste collection area, provided by others.

C. Training

1. Installer shall demonstrate proper operation and maintenance procedures to owner's representative.
2. Operating handle and owners manuals shall be provided to owner's representative.

END OF SECTION 8350

Section 08351-Accordion Door Partitions

PART 1 – GENERAL

I. DESCRIPTION

A. General

1. Furnish and install accordion partitions and suspension system. Provide all labor, materials, tools, equipment, and services for accordion walls in accordance with provisions of contract documents.

II. RELATED WORK BY OTHERS

- A. Preparation of opening will be by General Contractor. Any deviation of site conditions contrary to approved shop drawings must be called to the attention of Timbercon.
- B. All header, blocking, support structures, jambs, track enclosures, surrounding insulation, and sound baffles as required in 1.04 Quality Assurance.
- C. Prepunching of support structure in accordance with approved shop drawings.
- D. Paint or otherwise finishing all trim and other materials adjoining head and jamb of accordion partitions.

III. SUBMITTALS

- A. Complete shop drawings are to be provided prior to fabrication indicating construction and installation details. Shop drawings must be submitted within 60 days after receipt of signed contract.

IV. QUALITY ASSURANCE

- A. Preparation of the opening shall conform to the criteria set forth per ASTM E557 Standard Practice for Architectural Application and Installation of Operable Partitions
- B. The partition STC (Sound Transmission Classification) shall be achieved per the standard ASTM E90 test method.
- C. Noise isolation classifications shall be achieved per the standard test methods ASTM E336 and ASTM E413.
- D. Noise Reduction Coefficient (NRC) ratings shall be per ASTM C423.

- E. The manufacturer shall have a quality system that is registered to the ISO 9001 standards.

V. PRODUCT DELIVERY, STORAGE, AND HANDLING

- A. Proper storage of partitions before installation and continued protection during and after installation will be the responsibility of the General Contractor.

VI. WARRANTY

- A. The door shall be guaranteed for two years. In addition, the pantographs, trolleys, and tracks are guaranteed for 10 years from the date of acceptance for beneficial use.

PART 2 – PRODUCTS

I. ACCEPTABLE MANUFACTURERS

- A. Upon compliance with all of the criteria specified in this section, Manufacturers wishing to bid products similar to the product specified must submit to the architect 10 days prior to bidding complete data in support of compliance and a list of three past installations of products similar to those listed. The submitting manufacturer guarantees the proposed substituted product complies with the product specified and as detailed on the drawings.

II. MATERIALS

- A. Product to be top supported, manually operated, (Series 4100) accordion partition as manufactured by Hufcor Inc. or equal to.

- 1. Covers will be semi-rigid 5-ply laminated construction with manufacturer's standard vinyl fabric providing wrinkle-free impact resistant surfaces. Covers shall have steel and fiberglass strips laminated within each fold for acoustical purposes. Covers shall be removable and replaceable in the field.

- 2. Covers shall have multi-ply sweepstrips top and bottom both sides of the partition for acoustical seal. The top sweepstrips shall be 1/2" [13] and the bottom sweepstrips shall be 1-1/2" [38].

- 3. The internal framing shall be of 14 ga. [2] electro-galvanized, half hard steel riveted to form "X" construction pantographs. Pantographs shall provide even extension and contraction without binding on straight runs of track or on curves. Pantographs shall have built-in stops to prevent over-extending. Partition shall have pantographs located at top and bottom, plus intermediate pantographs located no more than 4' [1219] on center for heights over 8' [2.438m].

4. Vertical steel channel posts shall support pantographs at each end of the partition.

5. The lead post shall be trimmed with clear anodized aluminum and include mechanical latching and pull handles.

6. Weight of the door, 4.3 lbs. per sq. ft.

B. Suspension System:

1. Track shall be of clear anodized architectural grade extruded aluminum alloy 6063-T6 and be as specified by manufacturer for best performance as governed by overall size and weight of the partition.

2. Partition shall be supported by a 4-wheeled carrier at the lead post. Wheels to be of nylon-tired steel ball bearings. The lead carrier shall be adjustable to maintain proper alignment of the lead post to the jamb.

3. Intermediate carriers shall be spaced 18" [457] on center and have two wheels of nylon-tired steel ball bearings.

C. Finishes

1. Face finish shall be: (to be selected by owner):

a. Factory applied reinforced vinyl fabric with woven backing, weighing not less than 21 oz. per lin. yard. Color shall be selected from manufacturer's standard color selector.

III. OPERATION

A. Accordion door shall be manually moved from the storage area, pulled across the opening, and latched into the full height jamb molding with the latching handle.

B. Stack/Store Panels

1. The handle is manually unlatched and the door is moved into the stacked position.

IV. ACOUSTICAL PERFORMANCE

A. Acoustical performance shall be tested at a laboratory accredited by the U.S. Dept. of Commerce, National Institute of Standards and Technology, under the National Voluntary

Laboratory Accreditation Program (NVLAP) and in accordance with ASTM E90 Test Standards. Standard panel construction shall have obtained an STC rating of 41:

Model	STC
4100	41

1. Complete, unaltered written test report is to be made available upon request.

PART 3 – EXECUTION

A. Installation. The complete installation of the accordion partition system shall be by an authorized factory-trained installer and be in strict accordance with the approved shop drawings and manufacturer’s standard printed specifications, instructions, and recommendations.

B. Cleaning

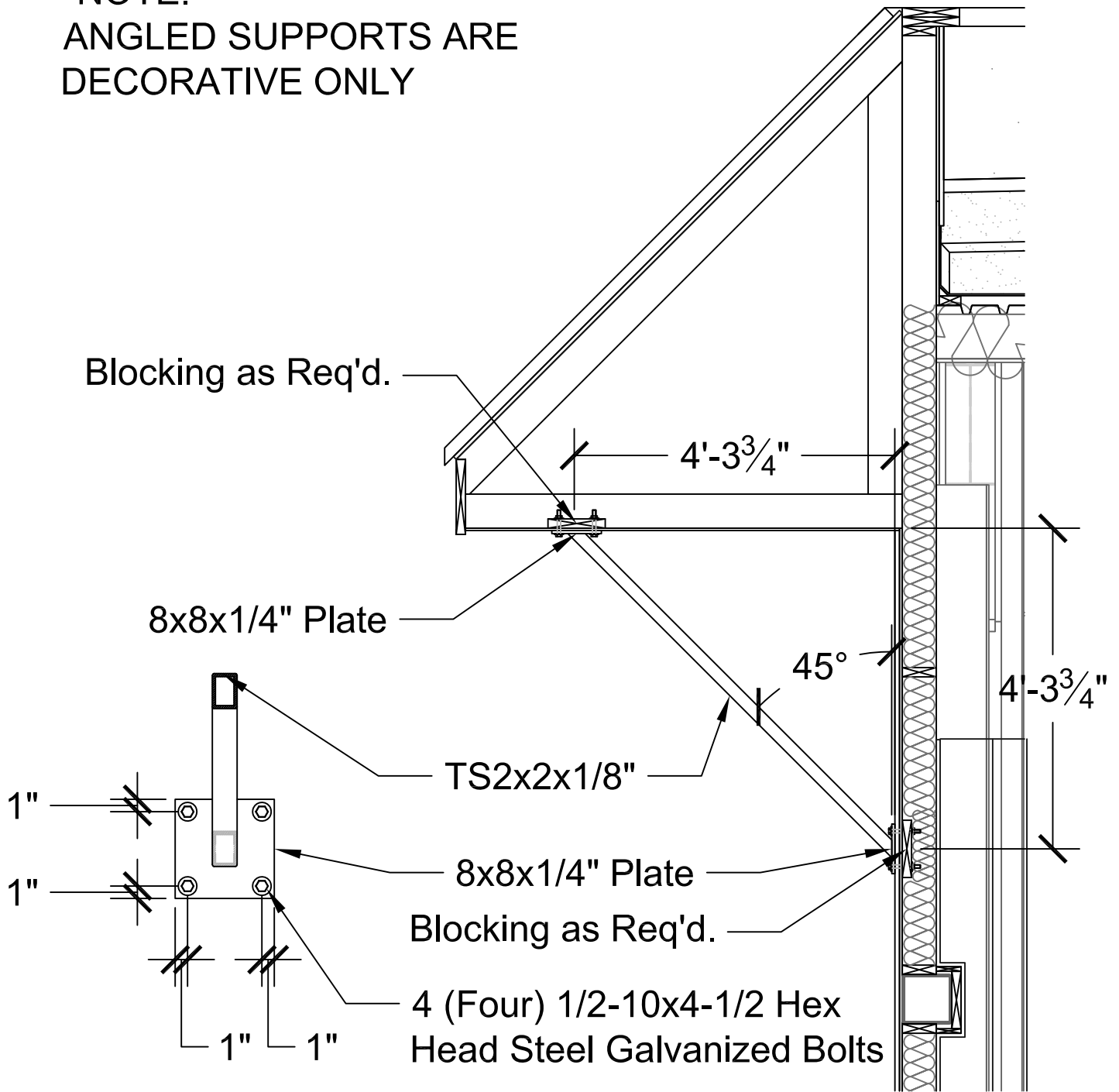
1. All track and door surfaces shall be wiped clean and free of handprints, grease, and soil.
2. Cartoning and other installation debris shall be removed from the job site.

C. Training

1. Installer shall demonstrate proper operation and maintenance procedures to owner’s representative.
2. Owners manuals shall be provided to owner’s representative.

END OF SECTION 08351-ACCORDION DOOR PARTITIONS

***NOTE:
 ANGLED SUPPORTS ARE
 DECORATIVE ONLY**



2 PLATE DETAIL
 Scale: 1" = 1'

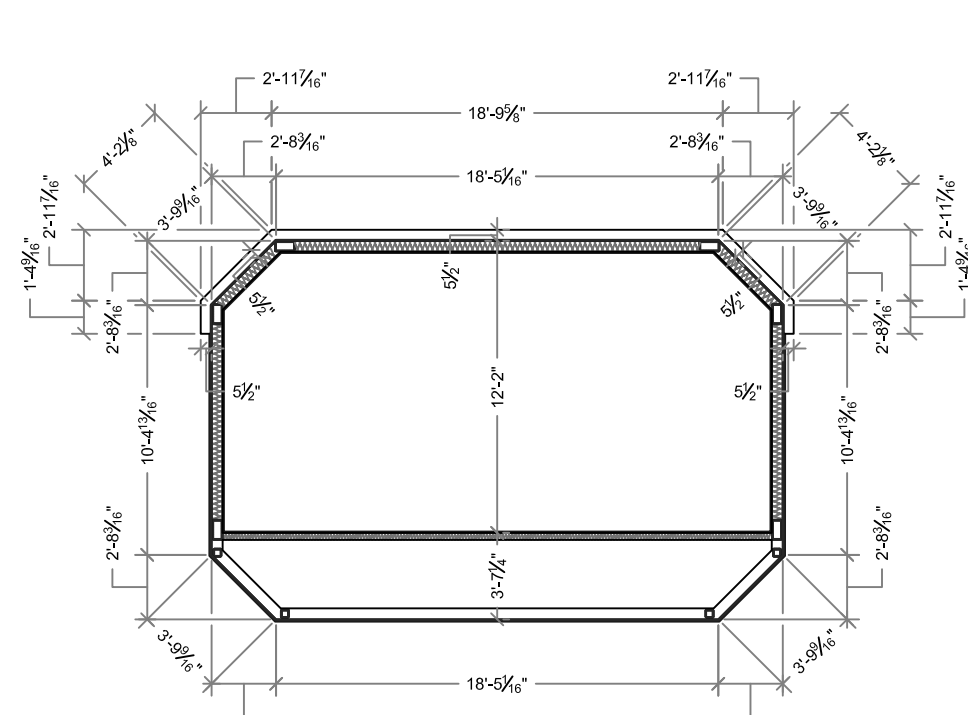
1 PARAPET DETAIL
 Scale: 1/2" = 1'

SHEET NUMBER
SD1
 OCTOBER 4, 2010

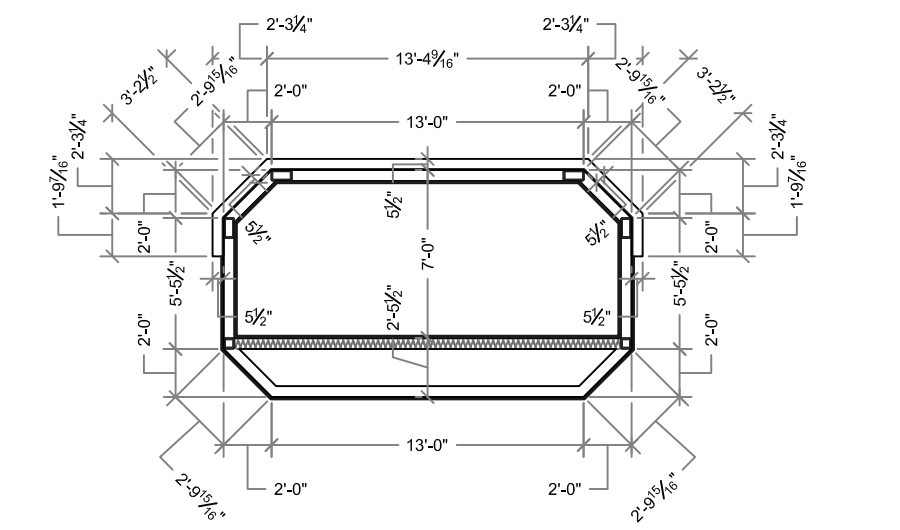
TIMBERCON CONSTRUCTION, INC
 1241 UNIVERSAL CITY BLVD.
 UNIVERSAL CITY, TX 78148
 (210) 590-2544
 FAX (210) 590-2352

TRUE VISION CHURCH
 2826 ACKERMAN ROAD
 KIRBY, TX 78219
 (210) 590-4460
 (210) 590-2540 FAX
 www.truevisionchurch.org

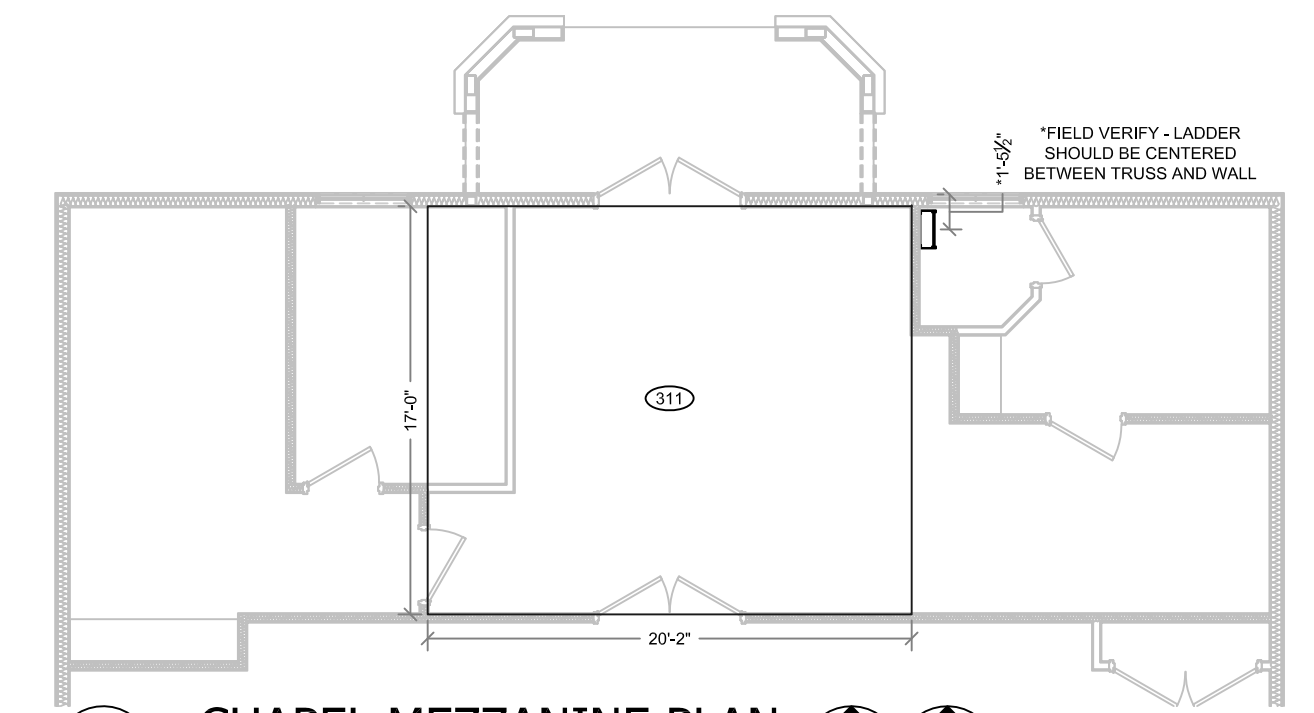
REVISIONS:	
DATE	BY



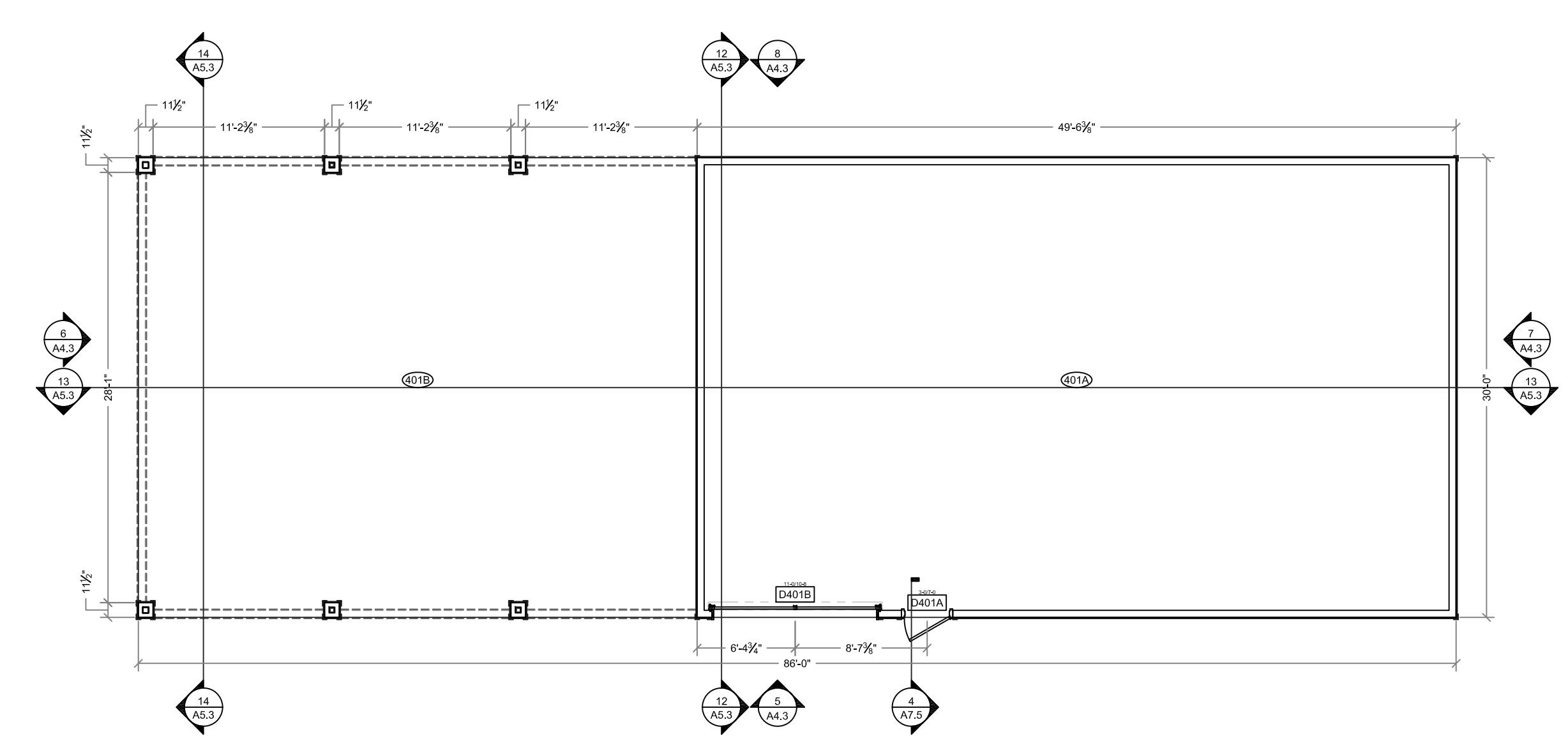
1 SANCTUARY TOWER PLAN
Scale: 1/8" = 1'



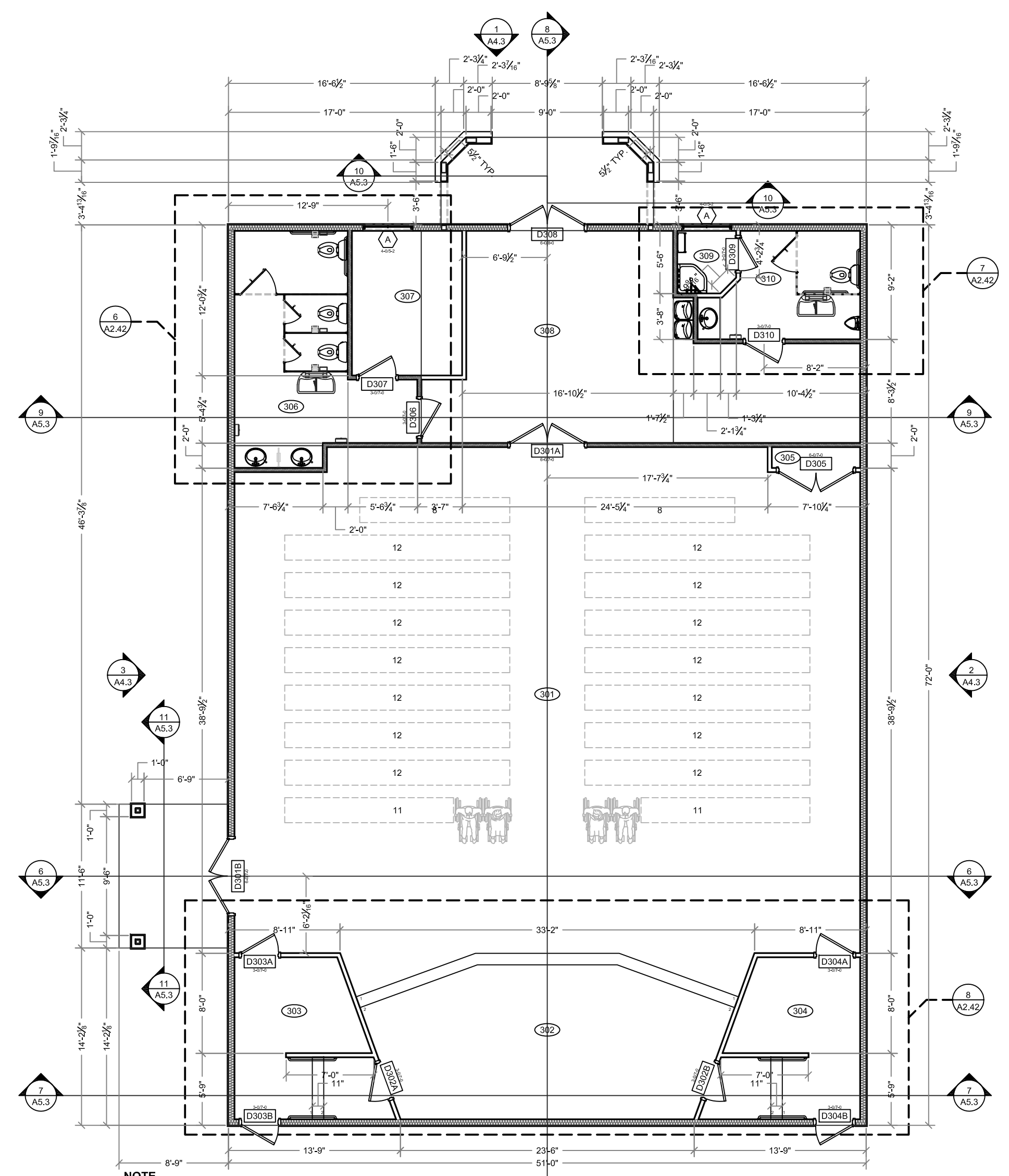
4 CHAPEL TOWER PLAN
Scale: 1/8" = 1'



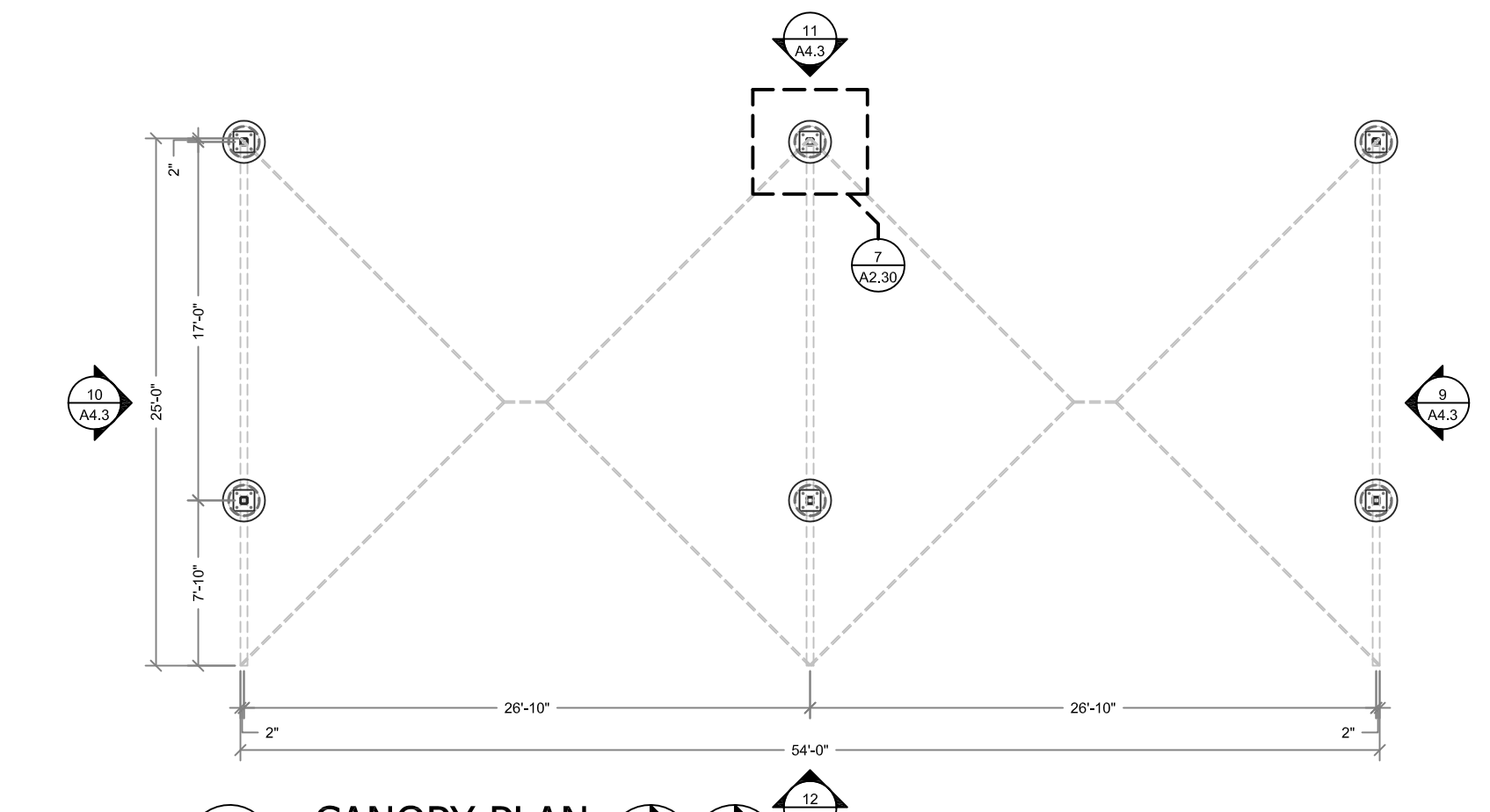
3 CHAPEL MEZZANINE PLAN
Scale: 1/8" = 1'



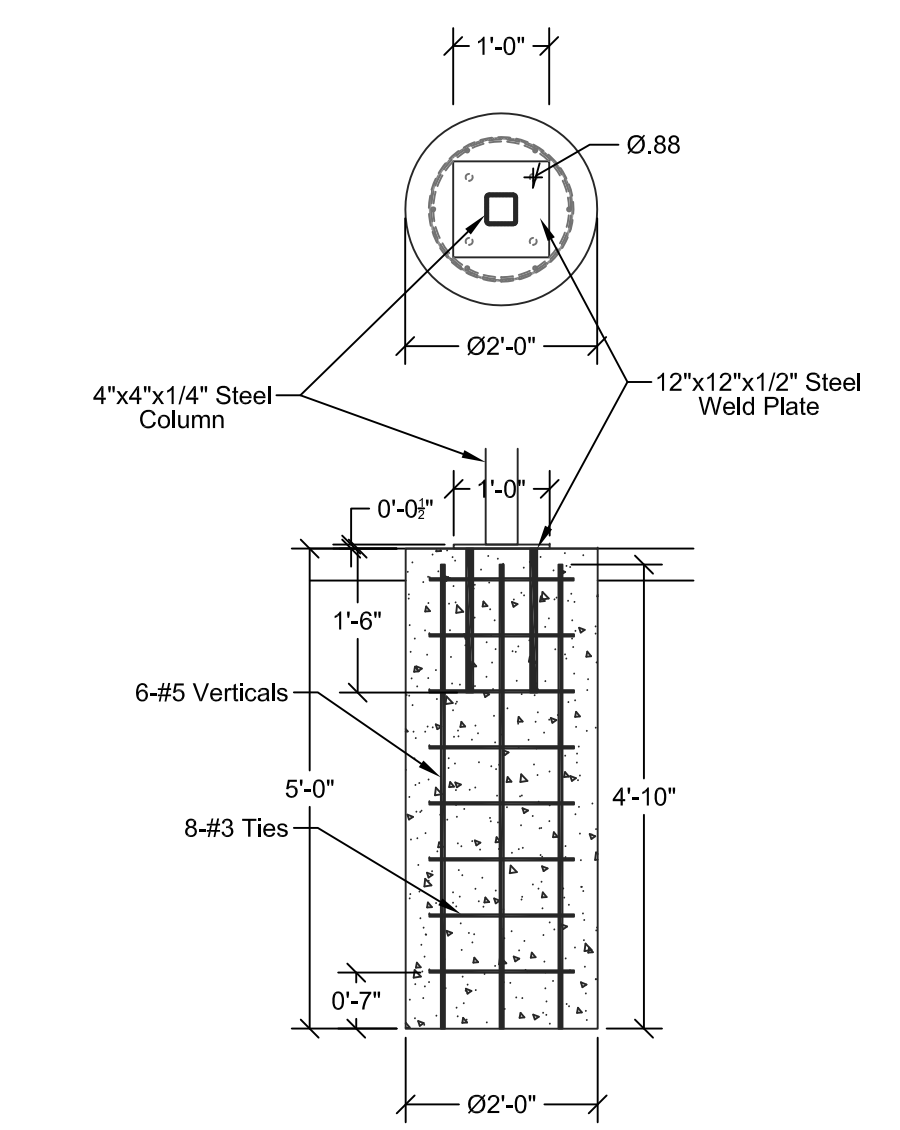
5 GARAGE FLOOR PLAN
Scale: 1/8" = 1'



2 CHAPEL FLOOR PLAN
Scale: 1/8" = 1'



6 CANOPY PLAN
Scale: 1/8" = 1'



7 PIER FOOTING DETAIL
Scale: 1/2" = 1'

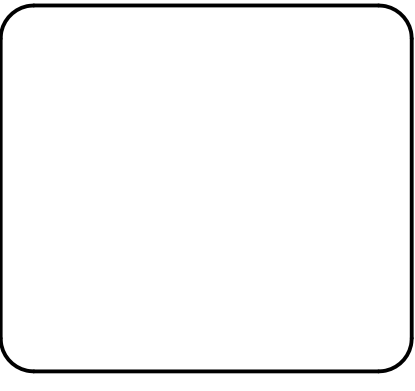
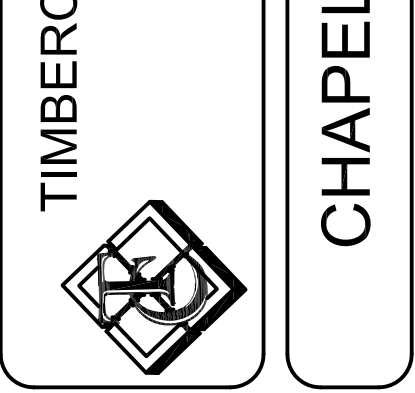
NOTE
UNLESS OTHERWISE NOTED:
1. ALL DOORS ARE 4 1/2" OFF THE HINGE SIDE WALL
2. ALL NON-PERPENDICULAR WALLS ARE AT A 70° (DEGREE) ANGLE TO EACH OTHER (INSIDE ANGLE)
3. ALL STAIR TREADS 11"

REVISIONS:	
DATE	BY

These drawings and accompanying specifications are the sole property of Timbercon Construction, Inc. and may not be used for any other project or by any other person or general contractor without prior written permission from Timbercon Construction, Inc.

TRUE VISION CHURCH
2826 ACKERMAN ROAD
KIRBY, TX 78219
(214) 590-2540 FAX
www.truevisionchurch.org

TIMBERCON CONSTRUCTION, INC.
1241 UNIVERSAL CITY BLVD.
UNIVERSAL CITY, TX 78148
(214) 590-2540 FAX
www.timbercon.net



SHEET NUMBER

A2.30

JULY 28, 2010

10/1/2010 12:11:36 PM, 1:1